



Hydraulic Breakers

DandA Blue Line

◀ Get the job done!

You want to get your breaking jobs done quickly, easily and at a reasonable cost – which brand of hydraulic breakers should you choose?

Simple, choose DandA Blue Line.

At DandA Blue Line 'Get the job done!' is our philosophy. Whether it's an attachment for demolition, construction or quarrying, we understand your company's needs. DandA Blue Line hydraulic breakers are reliable and robust, and we have a comprehensive selection of tools, optimized for your applications.

05

Good reasons to choose DandA Blue Line breakers

- Low ownership and operating cost
- Robust
- Excellence in sales and service support
- Simple to operate and service
- High parts availability



Our goal is to make your life easier

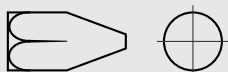
DandA Blue Line hydraulic breakers are easy to own. Characterized by their simplicity and robustness, they are designed to be easy to be owned and serviced.

If you want to 'Get the job done!' – DandA Blue Line hydraulic breaker is the answer!

The right tools for the job

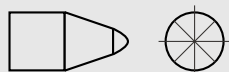
We offer an optimal selection of tool types for your applications. All our tools are quality heat-treated and are a robust and reliable choice for your day-to-day work.

Available Tools



Pyramid moil point

- Non-reinforced concrete breaking
- Primary breaking of concrete structures as well as compact and slightly fractured sedimentary rock



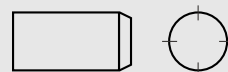
Conical point

- Non-reinforced concrete breaking
- Primary breaking of compact and slightly fractured sedimentary rock



Chisel

- Reinforced concrete breaking
- Primary breaking of highly fractured sedimentary, metamorphic & igneous rock

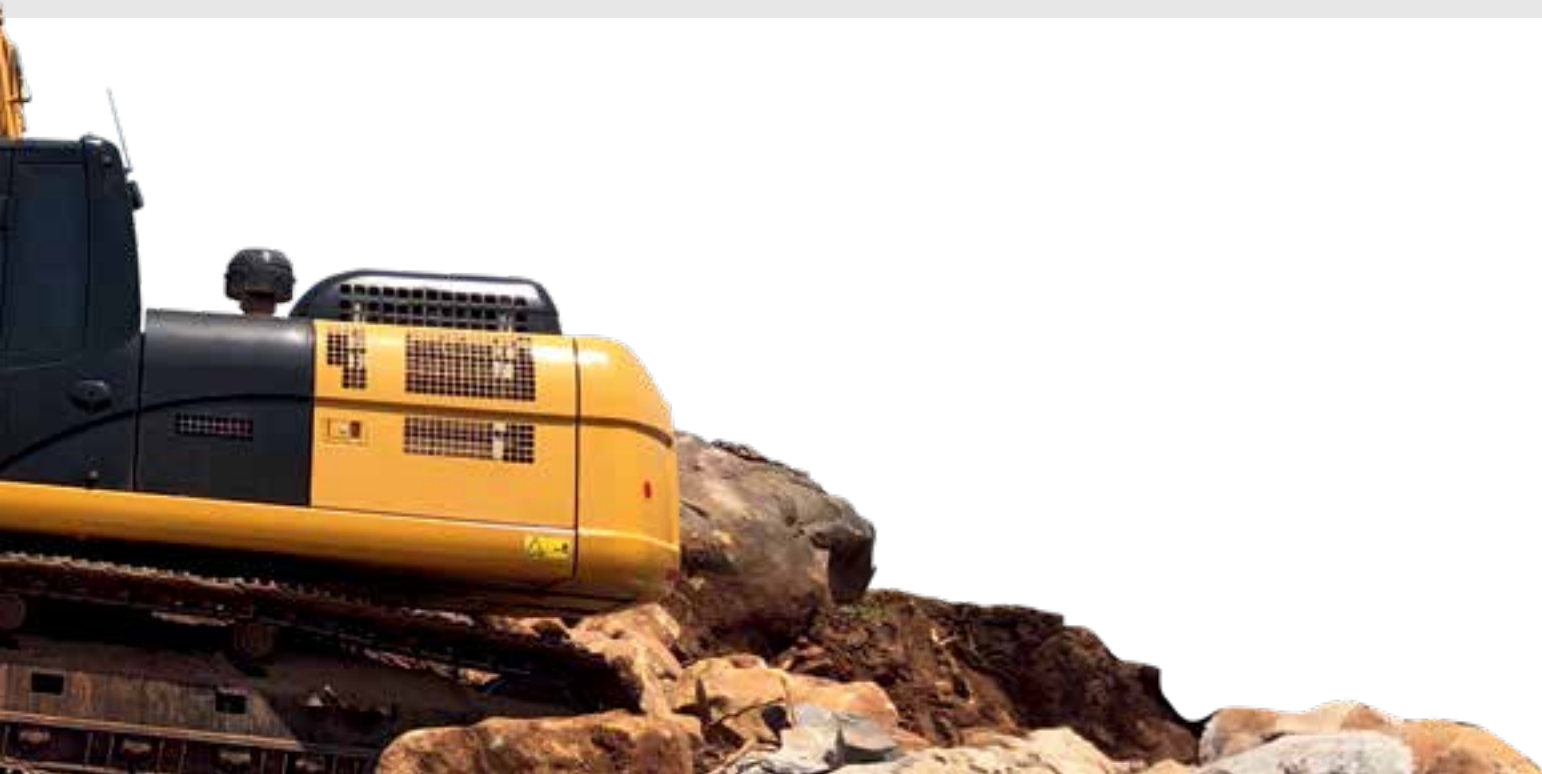


Blunt

- Secondary breaking of concrete & all rock types
- Primary breaking of compact to slightly fractured metamorphic & igneous rock
- Scaling

Whatever the carrier ...

... we have the hydraulic breaker you need. The DandA Blue Line hydraulic breakers are suitable for excavators, backhoe loaders, skid-steer loaders and mini excavators.



Blue line breaker specifications

Box type

Model		B 20B	B 35B	B 55B	B 75B	B 110B	B 140B	B 170B
Operating weight	kg	130	160	360	450	730	1,010	1,340
Tool diameter	mm	45	53	68	75	85	100	125
Operating pressure	kg/cm ²	90~120	90~120	110~140	120~150	130~160	150~170	150~170
Oil flow	lpm	20~40	25~50	40~70	50~90	60~100	80~110	90~120
Blow rate	bpm	700~1,200	600~1,100	500~900	400~800	400~800	350~700	350~650
Suitable carrier	ton	1.2~3	2.5~4.5	4~7	6~9	7~14	11~16	15~18
		B 220B	B 320B	B 380B	B 480B			
Operating weight	kg	2,000	2,460	2,930	3,920			
Tool diameter	mm	140	155	165	175			
Operating pressure	kg/cm ²	160~180	160~180	160~180	160~180			
Oil flow	lpm	120~180	180~240	200~260	210~290			
Blow rate	bpm	350~500	300~450	250~400	200~350			
Suitable carrier	ton	18~26	28~35	30~45	40~55			

Top type

Model		B 75T	B 140T	B 220T	B 320T	B 380T	B 480T
Operating weight	kg	380	890	1,750	2,560	3,070	3,910
Chisel/Tool diameter	mm	75	100	140	155	165	175
Operating pressure	kg/cm ²	120~150	150~170	160~180	160~180	160~180	160~180
Oil flow	lpm	50~90	80~110	120~180	180~240	200~260	210~290
Blow rate	bpm	400~800	350~700	350~500	300~450	250~400	200~350
Suitable carrier	ton	6~9	11~16	18~26	28~35	30~45	40~55

Side type

Model		B 20S	B 35S	B 55S	B 75S	B 110S	B 140S	B 220S
Operating weight	kg	90	120	250	380	510	765	1,740
Chisel/Tool diameter	mm	45	53	68	75	85	100	140
Operating pressure	kg/cm ²	90~120	90~120	110~140	120~150	130~160	150~170	160~180
Oil flow	lpm	20~40	25~50	40~70	50~90	60~100	80~110	120~180
Blow rate	bpm	700~1,200	600~1,100	500~900	400~800	400~800	350~700	350~500
Suitable carrier	ton	1.2~3	2.5~4.5	4~7	6~9	7~14	11~16	18~26

* Operating weight includes power cell, housing, working tool, mounting bracket, pins and hydraulic hoses only. It can vary depending on mounting bracket type.

Above specifications are subject to change without prior notice.

Ref. No. Brochure 01 / English / Printed in Seoul 2024. All product names in this publication are trademarks of Danda. Any unauthorized use or copying of the contents or any part thereof is prohibited. There might be changes in the design, outer shape and technical data without prior notification. Consult your Danda Customer Center for specific information.



www.dnabreaker.com

Head Office #901, ACE High-end Tower 9th, 233,
Gasam Digital 1-Ro, Geumcheon-Gu, Seoul, 08501, Korea
Tel (Rep.) : +82 2 6274 8111 Fax (Rep.) : +822 6488 9888

