



Bobcat®

ATTACHMENT



One Tough Animal.



ANGLE BROOM

Dirt, dried mud, light snow and other debris are quickly and efficiently swept away with this hydraulically driven attachment. Whether you're sweeping driveways, farmyards or warehouses, you can depend on the angle broom to get the job done right.

Description	Sweeping Width (mm)	Sweeping Width Fully Angled (mm)	Brush Diameter (mm)	Number of Bristle Sections (zigzag-straight)	Degree of Angle	Flow Range (L/min)	Control Kit Required	Working Flow
Angle Broom, 122cm	1219	1055@30°	543	23-4	±30° (manual)	30-50	No	Standard
Angle Broom, Reversible, 173cm, ACD	1727	1600@25°	813	33-2	±25° (hydr.cyl.)	30-68	Yes	Standard/High Flow
Angle Broom, Reversible, 213cm, ACD	2134	1956@25°	813	48-2	±25° (hydr.cyl.)	57-106	Yes	Standard/High Flow

• Approved machines

: SSL, CTL, TC



AUGER

Speed and perfect vertical accuracy ("knuckle-joint" design) are what you get with Bobcat auger. Bobcat auger is ideal for drilling in any ground conditions and smaller drive hosing adding 30cm more digging depth. Optional 3 types of bits & multitude of widths to best meet your any projects.

Description	Auger Bit Type	Digging Depth (mm)	Maximum Operating Pressure (bar)	Torque @ Maximum Pressure (Nm)	Maximum Speed (RPM) @ Maximum Rated Flow (L/m)	Delivered with Pin for Auger Bit	Weight (kg)	Working Flow
Auger, 10 Unit Drive	Round	1473	-	-	90@57	Round	69	Standard
Auger, 15C Unit Drive	Round-Hex	1575	207	2644	99@80	Round	106	Standard
Auger, 15H Unit Drive	Hex	1575	207	2644	99@80	Hex	91	Standard
Auger, 30C Unit Drive	Round-Hex	1575	221	5125	90@140	Round	115	Standard/High Flow
Auger, 30H Unit Drive	Hex	1575	221	5125	90@140	Hex	94	Standard/High Flow
High Torque Auger 35PH Drive	Hex	1829	241	5643	128@190	Hex	131	Standard/High Flow
High Torque Auger 50PH Drive	Hex	1829	241	7148	101@190	Hex	131	Standard/High Flow

• Approved machines

: SSL, CTL, MEX, TC, TH

• Option/Accessory



Standard duty

Heavy duty

Rock



BACKHOE

Transform your Bobcat® loader into a powerful, efficient, economical and versatile excavator with a Bobcat backhoe. They are ideal for landscaping and nursery work, sewage systems and septic tanks, water and power lines and many other jobs. Maximum digging depths vary from 1.5 m to 3.5 m.

Description	Digging Depth (mm)	Digging Force with Bucket (daN)	Digging Force with Dipper (daN)	Digging Reach (mm)	Hook-up System	Weight (kg)	Working Flow
Backhoe, M06*	1935	977	430	2235	Pin-on	310	Standard
Backhoe, 7BH*	2416	2355	1227	3139	X-change	589	Standard
Backhoe, 9BH*	2962	2367	1465	3691	X-change	674	Standard
Backhoe, 8811*	3448	3831	1344	4216	X-change	913	Standard
Backhoe, R30S**	2990	2140	1374	3757	Klacc™	840	Standard
Backhoe, R35S**	3510	3130	2257	4272	Klacc™	850	Standard

• Approved machines

: SSL, CTL

• Option/Accessory

- For R30S/R35S, must order rear stabilizers mounting kit, Quick-Tach rear stabilizers and auxiliary line kit (Rear auxiliary line kit: order through Bobcat parts)

* From North America
** From Europe

APPROVED MACHINES: SSL Skid-Steer Loader CTL Compact Track Loader MEX Compact Excavator
MTL Mini Track Loader TC Toolcat™ Utility Work Machine TH Telehandler

BREAKER

Bobcat® breakers offer high performance, low maintenance, and are easy to use. All breakers feature a frame with a cylindrical design and have a silenced housing as standard.

Description	Flow (L/min)	Blow Rate - Soft Ground (beats/min)	Blow Rate - Hard Ground (beats/min)	Operating Pressure (bar)	Weight (kg)	Working Flow
Breaker, HB580	17-35	1220	1350	120	111	Standard
Breaker, HB680	25-50	1220	1340	120	150	Standard
Breaker, HB880	30-65	1150	1310	120	220	Standard
Breaker, HB980	40-75	855-1060	1170-1450	120	280	Standard
Breaker, HB1180	55-100	680-1070	820-1280	125	372	Standard
Breaker, HB1380	70-120	780-1030	900-1230	125	385	Standard
Breaker, HB2380	75-125	690	910	130	405	Standard

• Approved machines

: SSL, CTL, MEX

• Option/Accessory



Description	Tools Selection
Inline wide chisel	A
Nail point	B
Crosscut asphalt chisel	C
Inline chisel	D
Blunt point	E
Tamping pad and tool	F
Crosscut chisel	G
Conical point	H
Crosscut wide chisel	I
Inline asphalt chisel	J

* Chisel : Various chisel can meet your any requirements (Order through the Bobcat parts)



Breaker, Hydraulic

BRUSHCAT

Handle tough brush clearing and landscaping applications easily with the Brushcat™ rotary cutter. This attachment easily cuts through the toughest grass and brush while mulching small branches and saplings up to 7.6 cm in diameter. This tool is ideal for clearing lakefront property, construction sites, power line access roads, trails and ditches.

Description	Cutting Width (mm)	Cutting Height (mm)	Flow Range (L/min)	Tip Speed (m/sec.@L/min)	Weight (kg)	Working Flow
Brushcat™ Rotary Cutter Standard Flow : RC66S	1676	76.2	57-91	57.9@57 92.6@91	652	Standard
Brushcat™ Rotary Cutter High Flow : RC66H	1676	76.2	91-136	57.9@91 86.8@136	652	High Flow
Brushcat™ Rotary Cutter Standard Flow : RC72S	1829	76.2	57-98	50.4@57 87.4@98	680	Standard
Brushcat™ Rotary Cutter High Flow : RC72H	1829	76.2	91-121	50.4@91 84@121	680	High Flow
Brushcat™ Rotary Cutter High Flow : RC80H	2032	76.2	91-151	55.5@91 92.5@151	717	High Flow

• Approved machines

: SSL, CTL, TC



Breaker, Hydraulic



Angle Broom



BUCKET, C/I (Construction/Industrial)

The strongest of all Bobcat® buckets. Ideal for everything from tough digging to material handling. C/I buckets offer good cutting edge visibility and excellent bucket breakout force. Heavy-duty construction/industrial buckets offer even more features required for severe-duty use.

Description	Width (cm)	Capacity SAE Heaped (L)	Bucket Back Angle (°)	Accepts Maximum Number of Teeth	Weight (kg)	Length (cm)	Height (cm)
Bucket, C/I, 127cm	127	270	70	6	160	81	54
Bucket, C/I, 142cm	142	310	70	6	194	81	54
Bucket, C/I, 157cm	157	360	70	7	211	81	54
Bucket, C/I, 173cm	173	400	70	7	213	81	54
Bucket, C/I, 188cm	188	440	70	8	242	81	54
Bucket, C/I, 203cm	203	470	70	8	256	81	54
Bucket, C/I, 173cm, Heavy Duty	173	532	70	7	291	97	61
Bucket, C/I, 188cm, Heavy Duty	188	580	70	8	309	97	61
Bucket, C/I, 203cm, Heavy Duty	203	630	70	8	332	97	61
Bucket, C/I, 213cm, Heavy Duty	213	670	70	8	344	97	61
Bucket, C/I, 224cm, Heavy Duty	224	700	70	9	351	97	61
Bucket, C/I, 208cm, Severe Duty	208	650	70	8	344	97	61
Bucket, C/I, 223cm, Severe Duty	223	700	70	9	351	97	61

• **Approved machines**

: SSL, CTL, TC

• **Option/Accessory**

- Bolt-on cutting edge
- Bolt-on teeth



Dirt Bucket



General Purpose Bucket (GP)



Low Profile Bucket



Load and Carry Bucket



Combination Bucket



Fertiliser & Grain Bucket



Skeleton Bucket



Snow & Light Material Bucket



BUCKET, MEX Digging Bucket

Tackle the toughest digging and material handling jobs with our robust digging buckets. They offer excellent breakout force for digging and easier bucket filling. Grading buckets increase profitability by removing ditch sediment quickly and easily.

Description	Width (mm)		Height (mm)		ISO-Heaped Capacity (m³)		Accepted Number of Teeth	
	3 ton	5 ton	3 ton	5 ton	3 ton	5 ton	3 ton	5 ton
Bucket Dig 30cm Pin	300	300	536	664	0.04	0.063	3	3
Bucket Dig 45cm Pin	450	450	536	664	0.07	0.107	3	3
Bucket Dig 60cm Pin	600	600	536	664	0.10	0.155	4	4
Bucket Dig 90/100cm Pin	900	1000	536	664	0.162	0.277	6	7

• **Approved machines**

: MEX

* Standard buckets available from 20cm to 100cm by compatible models, and HD buckets from 30cm to 100cm



Digging Standard Duty Bucket



Digging Heavy Duty Bucket



Grading Bucket



Tilt Bucket



Clay Spade Bucket



Skeleton Bucket

CLAMP, HYDRAULIC

Use this handy hydraulic clamp with a trenching bucket or 3-tine grapple to get a good grip on broken concrete, tree stumps and other odd shaped objects. When not needed, the clamp can be completely retracted onto the inside of the dipperstick and will not interfere with normal digging activities.

Description	Overall Length (mm)	Number of Teeth	Relieve Kit (Required)	Weight (kg)	Working Flow
Hydraulic Clamp, E17/E17z	594	2	Included in the kit	38	Standard
Hydraulic Clamp, E19/E20z, for Long Arm Machine	550	2	Factory installed	27	Standard
Hydraulic Clamp, E19/E20z, for Short Arm Machine	550	2	Factory installed	27	Standard
Hydraulic Clamp, E26/E27/E27z, Standard Clamp	729	2	Factory installed	54	Standard
Hydraulic Clamp, E26/E27/E27z, Long Clamp	789	2	Factory installed	65	Standard
Hydraulic Clamp, E34/E35z, Standard Clamp	729	2	Factory installed	56	Standard
Hydraulic Clamp, E34/E35z, Long Clamp	827	2	Factory installed	65	Standard
Hydraulic Clamp, E45/E50/E55	861	2	Factory installed	97	Standard
Hydraulic Clamp, E57W/E62	861	2	Factory installed	101	Standard
Hydraulic Clamp, E85, Standard Clamp	1004	2	Factory installed	120	Standard
Hydraulic Clamp, E85, Long Clamp	1174	2	Factory installed	136	Standard

• **Approved machines**

: MEX



DOZER BLADE

Bobcat dozer blade expands the versatility of your compact tool carrier with the 6-way adjustable blade with electric-over-hydraulic controls and the reversible cutting edge. Use this attachment to level, pile and grade loose dirt, gravel and sand, and backfill and shape landscape areas&construction site.

Description	Width (cm)	Angle ± (°)	Cylinders	Oscillation ± (°)	Skid Shoes	Reversible Cutting Edge (mm)	Working Width (Fully Angled) (mm)	Weight (kg)	Working Flow
Dozer Blade, 137cm	137	30	1	0	Adjustable	9.6x101.6	1189	140	Standard
Dozer Blade, 203cm	203	30	3	8	Adjustable	12.7x152	1760	430	Standard
Dozer Blade, 229cm	229	30	3	8	Adjustable	12.7x152	1982	447	Standard
Dozer Blade, 244cm	244	30	3	10	Adjustable	16x152	2121	716	Standard

• **Approved machines**

: SSL, CTL, TC



Angles 30° L/R



Oscillates 8°/10° L/R



Tilt Frw/Rvr



DUMPING HOPPER

Park it, load it and dump it. This attachment mounts as easily as a bucket on your loader, and can go wherever your loader goes. Empties fast and easy, just raise the loader arms and dump. Flat, smooth interior surfaces prevent materials from sticking. (Includes 8.5x12 Bobcat heavy duty tire. Tire assembly to be installed on Dumping Hopper.)

Description	Length (mm)	Width (mm)	Height (mm)	Capacity Heaped (m³)	Capacity Struck (m³)	Weight (kg)	Working Flow
Dumping Hopper, 10	2108	914	1016	0.84	0.73	304	Standard
Dumping Hopper, 25	2108	2133	1016	2.45	1.93	569	Standard

• **Approved machines**

: SSL, CTL



APPROVED SSL Skid-Steer Loader **CTL** Compact Track Loader **MEX** Compact Excavator
MACHINES: MTL Mini Track Loader **TC** Toolcat™ Utility Work Machine **TH** Telehandler



FORESTRY CUTTER

Take trees and underbrush from unsightly overgrowth to mulch in minutes with the Bobcat® forestry cutter. The forestry cutter leaves a carpet of mulch behind when clearing trees and brush for pre/post disaster mitigation, utility line and road right-of-way maintenance, site preparation, orchard and vineyard maintenance. Use it to cut firebreaks, clean lots and maintain property with ease.

Description	Cutting Width (mm)	Number of Teeth	Tree Diameter, Continuous Use (mm)	Tree Diameter, Intermittent Use (mm)	Tree Diameter, Occasional Removal (mm)	Weight (kg)	Working Flow
Forestry Cutter FRC150ST	1500	30	100-120	150-200	220-260	850	High Flow
Forestry Cutter FRC150HT	1500	30	100-120	180-220	250-300	1050	High Flow
Forestry Cutter FRC200HT	2000	36	100-120	180-220	250-300	1270	High Flow
Forestry Cutter, 50"	1270	24	102-127	178-229	254-305	975	High Flow
Forestry Cutter, 50" 2-Speed	1270	24	102-127	178-229	254-305	991	High Flow
Forestry Cutter, 60"	1524	30	102-127	178-229	254-305	1088	High Flow
Forestry Cutter, 60" 2-Speed	1524	30	102-127	178-229	254-305	1106	High Flow
Forestry Cutter, 70" 2-Speed	1828	36	102-127	178-229	254-305	1390	High Flow

- **Approved machines**
: SSL, CTL

GRADER

Turn your Bobcat® loader into a high-performance grading machine. The six-way hydraulically-controlled blade is easy to operate with switches located on steering levers. Optional laser control system offers more precise control and saves concrete, time and labor.

Description	Width (cm)	Blade Width Fully Angled (cm)	Blade Angle (Right or Left) (°)	Sideshift	Blade Sideshift Left/Right	Cylinder	Weight (kg)	Working Flow
Grader, 213 cm	213	193	25	Manual	305	3	624	Standard
Grader, 244cm, HD	244	212	30	Hydraulic	330	5	1264	Standard
Grader, 274cm, HD	274	238	30	Hydraulic	330	5	1298	Standard

- **Approved machines**
: SSL, CTL, TC
- **Option/Accessory**
 - Available for laser system
 - 2D,3D Grader system/Sonic tracer
 - More detail contact your Bobcat dealer



GRAPPLE, INDUSTRIAL

Built tough for reliability and endurance, the industrial bucket and fork with grapple will easily handle scrap, waste, brush and other hard-to-manage materials.

Description	Width (cm)	Number of Grapples	Number of Teeth STD	Number of Teeth Maximum	Maximum Open Height (cm)	Jaw Opening at Max. Open Height (cm)	Weight (kg)	Working Flow
Grapple, Industrial Bucket, 91cm	91	1x6	-	-	77	105	165	Standard
Grapple, Industrial Bucket, 122cm	122	1x6	-	-	77	105	203	Standard
Grapple, Industrial Bucket, 158cm	158	2x2	-	-	84	76	401	Standard
Grapple, Industrial Bucket, 178cm	178	2x2	-	-	84	76	418	Standard
Grapple, Industrial Bucket, 188cm	188	2x2	-	-	84	76	435	Standard
Grapple, Industrial Bucket, 203cm	203	2x2	-	-	90	84	499	Standard
Grapple, Industrial Fork, 170cm	170	2x2	7	13	84	77	425	Standard
Grapple, Industrial Fork, 200cm	200	2x2	8	15	89	84	552	Standard

- **Approved machines**
: SSL, CTL, TC, TH
- **Option/Accessory**
 - Port relief, 275bar (Recommended to install a port relief on the loader for use with root grapple)

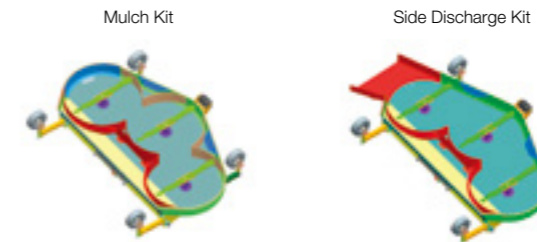


MOWER

Ideal for rough-cut applications, including road ditch right-of-way, golf course roughs and large acreage mowing. The mower has three partially overlapping blades that cut clean with no skips. It eliminates driving over the grass before cutting, and provides excellent visibility of the work area.

Description	Cutting Width (cm)	Number of Blades	Shutoff Travel Height (mm)	Cutting Height Range (mm)	Tip Speed (m/sec.@L/min)	Weight (kg)	Working Flow
Mower, 183cm, Non-CE	1816	3	86	51-140	61@57 89@83	400	Standard
Mower, 229cm, Non-CE	2273	3	86	51-140	59@57 87@83	450	Standard

- **Approved machines**
: SSL, CTL, TC
- **Option/Accessory**
 - Mulch kit, 183cm
 - Mulch kit, 229cm
 - Side discharge kit, 183cm
 - Side discharge kit, 229cm



PALLET FORK

Ideal to handle any kind of bulky or bagged material from fertiliser to seed and animal feed. Especially handy when working in tight areas or along narrow aisles.

Description	Maximum Capacity (kg)	Operating Weight (kg)	Operating Weight w/ Forks (kg)	Frame Width (mm)	Frame Width w/ Step (mm)	Height (mm)	Height w/ Extension (cm)	Teeth Length (cm)	Walk-Through Width (cm)
Standard (MT55-S70)	320	49	122	936	-	876	-	91	-
Standard	1130	60	141	1145	1272	871	-	106	33
Heavy	1810	74	164	1145	1272	871	-	106&122	33
Severe	2495	120	228	1308	1435	871	1097	106&122	33
Hydraulic	1360	170	256	1220	-	991	-	122	-

- **Approved machines**
: SSL, CTL, TC
- **Option/Accessory**
 - Brick-guard center
 - Brick-guard extension



APPROVED MACHINES: SSL Skid-Steer Loader CTL Compact Track Loader MEX Compact Excavator
MTL Mini Track Loader TC Toolcat™ Utility Work Machine TH Telehandler



PLANER

Bobcat planer quickly and efficiently remove asphalt or concrete. Hydraulic side-shift features for planing close to walls and curbs. Consistent depth control and ski depth give good visibility. Make precise adjustments with fingertip controls. Various drums/self leveling planers meet all needs of your jobsites.

• Planer

Description	Maximum Cutting Width (cm)	Cutting Depth (with std drum) (cm)	Maximum Cutting Angle ± (°)	Sideshift (cm)	Minimum Planing Distance Next to Curb (cm)	Number of Bits	Weight (kg)	Working Flow
Planer, 35cm (Equipped with 35cm All Purpose Drum)	35	15	15	75	0	46	660	Standard
Planer, 46cm (Equipped with 46cm Fast Cut Drum)	46	15	15	75	0	47	668	High Flow
Planer, 46cm (Without Drum)	46	15	15	75	0	0	539	High Flow
Planer, 61cm (Equipped with 61cm Fast Cut Drum)	61	15	15	75	0	57	731	High Flow
Planer, 61cm (Without Drum)	61	15	15	75	0	0	561	High Flow

• Planer (Self Leveling)

Description	Maximum Cutting Width (cm)	Cutting Depth (with std drum) (cm)	Maximum Cutting Angle ± (°)	Sideshift (cm)	Minimum Planing Distance Next to Curb (cm)	Number of Bits	Weight (kg)	Working Flow
Self Leveling Planer, 45cm	45	15	15	65	6.5	42	742	High Flow
Self Leveling Planer, 50cm	50	17	15	65	6.5	42	845	High Flow
Self Leveling Planer, 60cm	60	17	15	65	6.5	54	910	High Flow
Self Leveling Planer, 100cm	102	13	8	65	6.5	78	1032	High Flow
Self Leveling Planer, 100cm with 60(fixed) /40 (removable)drum	100	13	8	65	6.5	54/32	1076	High Flow
Self Leveling Planer, 120cm	120	13	8	65	6.5	90	1135	High Flow

• Approved machines

: SSL, CTL

• Option/Accessory

- Various drums and bits available to meet your needs exactly
- Drums: All purpose/Fast cut/Slot cut/Smooth cut/Surface cut
- Bits: All purpose/Concrete/Heavy duty
- (For more details, contact your Bobcat dealer)
- Guide rod kit to help the operator maintain a straight cut

SAND CLEANER

Keep the beach clean and quickly remove any litter by using the Bobcat Sand Cleaner. It allows you to sift the sand and collect debris as small as cigarette butts. Could be used on public beaches or private resorts, kids playgrounds, volleyball pitches, racing tracks, farms, ...

Description	Working Width (mm)	Working Depth (mm)	Bucket Capacity (L)	Performance (m ² /h)	Working Pressure (bar)	Working Flow (L/min)	Weight (kg)	Working Flow
Sand Cleaner - SC200	1900	Up to 200	350	Up to 15,000	80	40	715	Standard

• Approved machines

: CTL

• Option/Accessory

Description	Weight (kg)	Comment
Screening net 5x5 mm (set of 2 grids, left and right)	38	For very fine cleaning. Not recommended on wet sand.
Screening net 10x10 mm (set of 2 grids, left and right)	35	Able to pick up cigarette ends.
Screening net 15x15 mm (set of 2 grids, left and right)	32	Standard grids. Able to pick up cigarette ends.
Screening net 20x20 mm (set of 2 grids, left and right)	30	Reinforced grids to collect rocks.
Sand Cleaner finishing blade	60	Removes the machine track marks for a nice finish.



SNOW BLOWER

Extend your Bobcat® loader work into winter with a hydraulically driven snowblower. This attachment is ideal for clearing sidewalks, driveways and parking lots. Adjustable height skid shoes position cutting edge for gravel or pavement. Depending on model, throws snow up to 12 m.

Description	Width (mm)	Hydraulic Motor Package	Auger Diameter (mm)	Fan Diameter (mm)	Intake Diameter (mm)	Cutting Edge (mm)	Throw Distance (up to) (m)	Weight (kg)	Working Flow
Snow Blower, 150x48, 5.5 Hydraulic Motor	1306	5.5	356	381	584	9x76	7.6	211	Standard
Snow Blower, 200x60, 6.2 Hydraulic Motor	1587	6.2	356	508	635	13x102	12.2	357	Standard/High Flow
Snow Blower, 200x66, 6.2 Hydraulic Motor	1740	6.2	356	508	635	13x102	12.2	368	Standard/High Flow
Snow Blower, 200x66, 9.6 Hydraulic Motor	1740	9.6	356	508	635	13x102	12.2	368	Standard/High Flow
Snow Blower, 200x72, 6.2 Hydraulic Motor	1892	6.2	356	508	635	13x102	12.2	379	Standard/High Flow
Snow Blower, 200x72, 8.0 Hydraulic Motor	1892	8	356	508	635	13x102	12.2	379	Standard/High Flow
Snow Blower, 200x72, 9.6 Hydraulic Motor	1892	9.6	356	508	635	13x102	12.2	379	Standard/High Flow
Snow Blower, 200x78, 6.2 Hydraulic Motor	2045	6.2	356	508	635	13x102	12.2	390	Standard/High Flow
Snow Blower, 200x78, 9.6 Hydraulic Motor	2045	9.6	356	508	635	13x102	12.2	390	Standard/High Flow
Snow Blower, 240x72, 9.6 Hydraulic Motor	1892	9.6	457	610	876	13x102	12.2	459	Standard/High Flow
Snow Blower, 240x84, 8.0 Hydraulic Motor	2197	8	457	610	876	13x102	12.2	501	Standard/High Flow
Snow Blower, 240x84, 9.6 Hydraulic Motor	2197	9.6	457	610	876	13x102	12.2	501	Standard/High Flow
Snow Blower, SBX240x72, 12.3 Hydraulic Motor	1892	12.3	470	610	850	13x102	13.7	499	High Flow



• Approved machines

: SSL, CTL, MTL, TC

• Option/Accessory

- Truck loading chute for SB240 and SBX240 (with high flow option)

SOIL CONDITIONER

A versatile, cost-effective landscaping attachment. It saves time and labour when smoothing ruts, moving material or levelling mounds. Produces a perfect bed for seeding and sodding.

Description	Width (cm)	Working Width (fully angled 25°)	Angling / Depth Adjustment	Number of Teeth	Tyres	Required Hydraulic Flow (L/min)	Weight (kg)	Working Flow
Soil Conditioner, 122 cm, Manual	122	116	Manual	81	Pneumatic	38-68	288	Standard
Soil Conditioner, 183 cm, Hydraulic	183	165	Hydraulic	121	Foam filled	49-140	567	Standard
Soil Conditioner, 183 cm, Hydraulic, High Flow	183	165	Hydraulic	121	Foam filled	95-140	567	High Flow
Soil Conditioner, 214 cm, Hydraulic	214	193	Hydraulic	141	Foam filled	68-140	587	Standard
Soil Conditioner, 214 cm, Hydraulic, High Flow	214	193	Hydraulic	141	Foam filled	113-140	587	High Flow

• Approved machines

: SSL, CTL, TC



STEEL TRACK

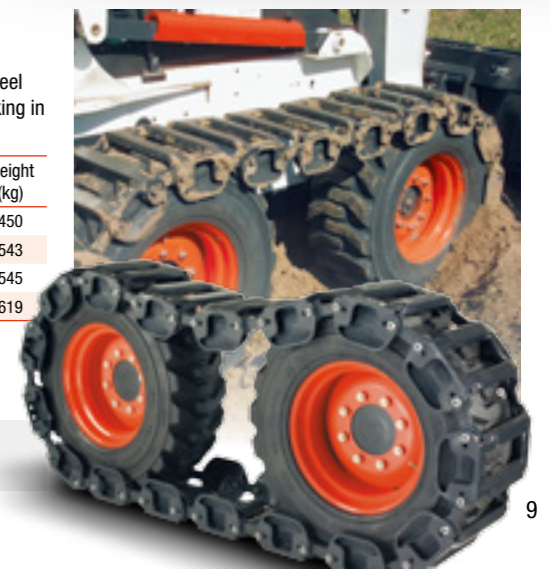
Improve performance in rough, rocky, and muddy conditions with steel tracks. Designed for Bobcat® loaders, steel tracks provide better flotation and reduced ground pressure when operating in tough environments. When working in soft and loose conditions, steel tracks improve traction.

Description	Tyre Size	Number of Pads	Machine Width with Tracks (mm)	Wheel Spacers (5cm)	Lift Arm Stop	Weight (kg)
Steel Tracks Package, 500 Series	10-16.5	34	-	-	-	450
Steel Tracks Package, S630, S650	12-16.5	38	2007	Included	Not required	543
Steel Tracks Package, S770	12-16.5	38	2007	Included	Not required	545
Steel Tracks Package, S850	14-17.5	42	2184	Included	Not required	619

• Approved machines

: SSL

APPROVED MACHINES: SSL Skid-Steer Loader CTL Compact Track Loader MEX Compact Excavator MTL Mini Track Loader TC Toolcat™ Utility Work Machine TH Telehandler





STUMP GRINDER

Grind tree stumps into mulch with the powerful action of the stump grinder attachment. The front mounting of a carrier gain maneuverability in tight areas and easy positioning over the stump. Using with high flow option, stumps are eliminated more quickly.

Description	Flow Range (L/min)	Cutting Height (mm)	Max. Cutting Depth (mm)	Max. Cutting Angle (°)	Grinder Reach at Ground Level (mm)	Number of Teeth	Weight (kg)	Working Flow
Stump Grinder, SG30	38-53	279	279	90	1175	16	171	Standard
Stump Grinder, SG60	64-121	806	381	80	1880	32	445	Standard/High Flow
Stump Grinder, SGX60, High Flow	95-151	806	381	80	1880	32	451	High Flow

• **Approved machines**

: SSL, CTL, MTL, TC



SWEEPER

This handy attachment sweeps, collects and dumps dirt and debris. In addition, it cleans up in forward or reverse. Perfect for cleaning parking lots, sidewalks, docks and warehouses. It can also be used to spread material evenly across a site. An optional gutter brush is available.

Description	Sweeping Width (cm)	Bucket Capacity (m³)	Brush Diameter (mm)	Bristle Material	Number of Sections	Speed at Flow (rpm) (L/min)	Weight (kg)	Working Flow
Sweeper, 112 cm	112	0.19	546	Polypropylene	21	185@57	252	Standard
Sweeper, 137 cm	137	0.23	546	Polypropylene	26	185@57	295	Standard
Sweeper, 152 cm	152	0.37	546	Polypropylene	29	215@57	362	Standard
Sweeper, 183 cm	183	0.45	546	Polypropylene	35	215@57	413	Standard
Sweeper, 213 cm	213	0.52	610	Polypropylene	42	215@57	442	Standard

• **Approved machines**

: SSL, CTL, TC

• **Option/Accessory**

- Gutter brush
- Wheel kit
- Water kit



TILLER

A great landscaping attachment. It quickly breaks up ground and mixes compost and other materials into the soil. Offset mounting permits tilling next to sidewalks, curbs and buildings.

Description	Width (cm)	Digging Depth (cm)	Required Hydraulic Flow (L/min)	Number of Tines	Travel Direction	Weight (kg)	Working Flow
Tiller, 102 cm	102	10.2	34-68	32	Forward/Reverse	230	Standard
Tiller, 158 cm	158	15.2	64-140	36	Forward/Reverse	321	Standard/High Flow
Tiller, 193 cm	193	15.2	64-140	44	Forward/Reverse	361	Standard/High Flow

• **Approved machines**

: SSL, CTL, TC

APPROVED MACHINES: SSL Skid-Steer Loader CTL Compact Track Loader MEX Compact Excavator
MTL Mini Track Loader TC Toolcat™ Utility Work Machine TH Telehandler

TRENCHER

This versatile tool can be used for a variety of jobs ranging from light to high-production trenching. Digging depths range from 60 cm to 1.5 m. The sideshift feature lets you get close to walls or fences.

Description	Digging Depth (mm)	Trench Width (mm)	Boom Length (mm)	Working Speed (m/h)	Required Hydraulic Flow (L/min)	Sideshift (mm)	Sideshift System (as standard)	Weight (kg)	Working Flow
Trencher, MX112*	600	101-203	1000	-	49-76	-	-	256	Standard
Trencher, LT112 w/Chain Complete	600	101-203	1000	±250-500	34-57	409	Manual	278	Standard
Trencher, LT113 w/Chain Complete	900	101-203	1334	±250-500	34-57	409	Manual	289	Standard
Trencher, LT213 w/Chain Complete	900	101-203	1334	±250-500	42-68	587	Manual	329	Standard
Trencher, LT313 w/Chain Complete	1200	152-305	1664	±250-500	57-83	587	Manual	444	Standard
Trencher, LT405 w/Chain w/o Teeth	1219	152-305	1600	±250-500	98-151	660	Hydraulic	689	High Flow
Trencher, LT414 w/Chain Complete	1575	152-203	2011	±250-500	98-151	554	Hydraulic	552	High Flow

• **Approved machines**

: SSL, CTL, MEX, TC

• **Option/Accessory**

- Various trencher option meet all needs of your projects (Order through Bobcat parts)
- Tooth: Cup tooth/Carbide tooth
- Spacer kit (For more wider trench: 15-30cm width)
- Wider trench cleaner

* X-change only



VIBRATORY ROLLER

The ideal compacting tool for flatwork, trenches and asphalt patching jobs. Compacts while moving forward or in reverse. Offset drum design lets you get right next to sidewalks, walls or curbs. Drum oscillation keeps the roller in contact with the surface on uneven terrain.

Description	Working Width (mm)	Wheel Diameter (mm)	Number of Pads	Oscillation ± (°)	Dynamic Force (kN@L/min)	Frequency (vpm@L/min)	Weight (kg)	Working Flow
Vibratory Roller, 122cm, Padded Drum	1219	643	72	12	63.4@75	2879@75	807	Standard
Vibratory Roller, 185cm, Padded Drum	1854	643	102	7.5	63.5@90	2882@90	993	Standard
Vibratory Roller, 122cm, Smooth Drum	1219	660	0	12	63.4@75	2879@75	811	Standard
Vibratory Roller, 185cm, Smooth Drum	1854	660	0	7.5	63.5@90	2882@90	1002	Standard
Vibratory Roller, 203cm, Smooth Drum	2032	660	0	7.5	63.5@90	2882@90	1052	Standard

• **Approved machines**

: SSL, CTL



WHEEL SAW

This rugged, powerful saw cuts through asphalt, concrete, frozen ground or wire mesh with more precision than air or hydraulic breakers. Use it for road repair and for laying water, gas, electric and fibre-optic cables. The trench cleaner raises and lowers hydraulically. Depending on model, cutting depth ranges from 15 cm to 80 cm. (For high flow machines only)

Description	Working Width (mm)	Working Depth (mm)	Trench Cleaner	Number of Bits	Wheel Rotation @113 L/min (rpm)	Weight (kg)	Working Flow
WS18 Wheelsaw, 5cm, Wheel&Trench Cleaner	50	150-450	Yes	64	80	1097	High Flow
WS18 Wheelsaw, 8cm, Wheel&Trench Cleaner	80	150-450	Yes	64	80	1095	High Flow
WS18 Wheelsaw, 10cm, Wheel&Trench Cleaner	100	150-450	Yes	56	80	1027	High Flow
WS18 Wheelsaw, 13cm, Wheel&Trench Cleaner	130	150-450	Yes	56	80	1050	High Flow
WS18 Wheelsaw, 16cm, Wheel&Trench Cleaner	160	150-450	Yes	56	80	1053	High Flow
WS18 Wheelsaw, 20cm, Wheel&Trench Cleaner	200	150-450	Yes	62	80	1078	High Flow
WS-SL20 Wheelsaw with 5cm segmented Wheel	50	250-500	No	50	80	1220	High Flow
WS-SL20 Wheelsaw with 8cm segmented Wheel	80	250-500	No	40	80	1260	High Flow
WS-SL20 Wheelsaw with 10cm segmented Wheel	100	250-500	No	50	80	1275	High Flow
WS-SL20 Wheelsaw with 12cm segmented Wheel	120	250-500	No	55	80	1290	High Flow
WS24 Wheelsaw, 10cm, Wheel&Trench Cleaner	100	200-600	Yes	72	67	1216	High Flow
WS24 Wheelsaw, 13cm, Wheel&Trench Cleaner	130	200-600	Yes	80	67	1222	High Flow
WS24 Wheelsaw, 16cm, Wheel&Trench Cleaner	160	200-600	Yes	96	67	1284	High Flow
WS24 Wheelsaw, 20cm, Wheel&Trench Cleaner	200	200-600	Yes	96	67	1300	High Flow
WS32 Wheelsaw, 25cm, Wheel	250	450-800	No	72	67	1416	High Flow

• **Approved machines**

: SSL, CTL

• **Option/Accessory**

- Various accessory meets all needs of your projects
- Right/Left side close kit
- 5-12cm sector (5 pieces)
- Counter weight (order through the Bobcat parts)
- Nozzel spray kit





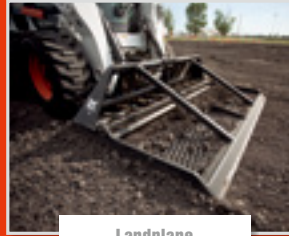
THE LEADER IN VERSATILITY AND MANEUVERABILITY



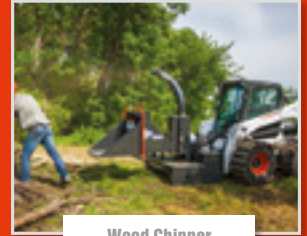
Concrete Mixer



Concrete Pump



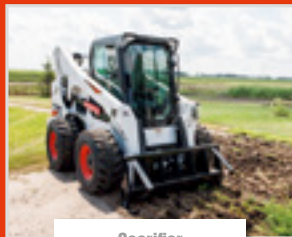
Landplane



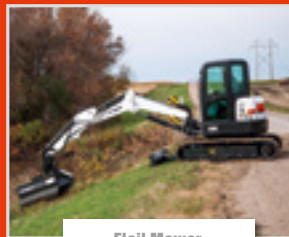
Wood Chipper



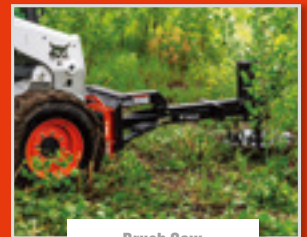
Utility Fork



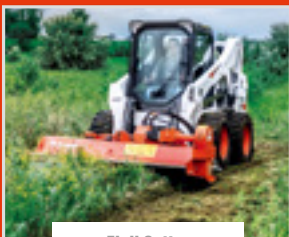
Scarifier



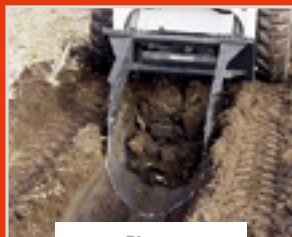
Flail Mower



Brush Saw



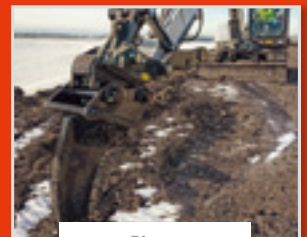
Flail Cutter



Digger



Box Blade



Ripper



Landscape Rake



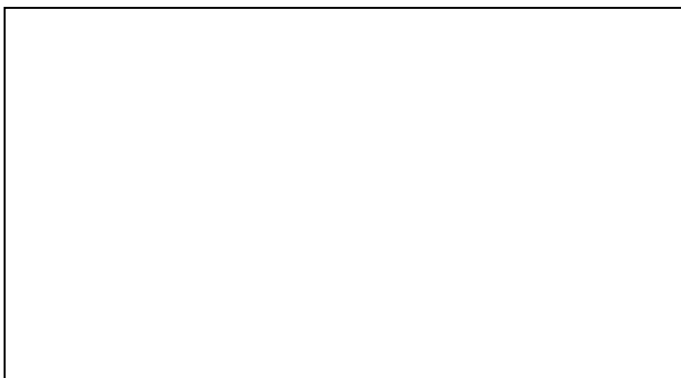
Bale Fork



Spreader



Tree Spade



Certain specification(s) are based on engineering calculations and are not actual measurements. Specification(s) are provided for comparison purposes only and are subject to change without notice. Specification(s) for your individual Bobcat equipment will vary based on normal variations in design, manufacturing, operating conditions, and other factors.



Bobcat is a Doosan company. Doosan is a global leader in construction equipment, power and water solutions, engines, and engineering, proudly serving customers and communities for more than a century. Bobcat®, the Bobcat logo and the colors of the Bobcat machine are registered trademarks of Bobcat Company in the United States and various other countries. ©2020 Bobcat Company. All rights reserved.

